



# Northern Arts News

A Publication of the Region 2 Arts Council

## Artist Interview: Maureen Gibbon

By: Erin Lynn Marsh

As I read Maureen Gibbon's first poetry collection, *Magdalena* (White Pine Press), I was immediately struck by its eroticism and exploration of being a stranger in an unfamiliar place. She uses the prose poem, and the freedom she finds within form, to write about wonderfully imperfect people, places and situations. I interviewed Ms. Gibbon in late April 2008 in her office at Bemidji State University's English Department and found a woman at home with her various and dialectical passions.

Maureen Gibbon's office in BSU's Hagg-Sauer Hall is extremely small; she sets it aglow with a simple desk lamp and somehow finds room for a comfortable guest chair, an entire wall of bookshelves and two artfully posed kimonos. As we settle in to discuss her first poetry collection, she explains the "blocky & plain" looking prose poems are more her style. When I asked her how she chooses the prose poem, she insisted the form chose her. After earning her M.F.A. in fiction in New York City, she hit a plateau in her work. She set fiction aside, hoping it would come back to her in a "more organic way." The prose poem led her back into writing after she discovered she had been writing them for years without knowing it – she even discovered a complete, fully realized prose poem in a journal she kept in her twenties! Gibbon was "struck with the form," as it was "the most direct and down-to-earth way" for her to say what she needed to say. Gibbon says "lines make me self-conscious" and while there are pauses and breaks in prose poems, "they just draw less attention to themselves."

Prior to writing *Magdalena*, Gibbon was traveling a lot, taking "solitary trips" for conferences and job

interviews, getting images for use in her poems. For instance, in her poem "The Way I Say Things," Gibbon writes "Those years in the city I lost myself. I loved what was different/ from me: streets and subways, books and museums, Coney Island." This sense of otherness sits quite comfortably alongside startling images of intimacy she uses in poems such as "Touching My Scars," "After my last surgery, when I couldn't bring/myself to look, J. checked my incision everyday. He described the/stitches ...."

Gibbon concedes that her mother has yet to read the book, but in general doesn't get too nervous about what other people think. "They get nervous about me," she says with a laugh. "Sensuality is a life-force; I claim it."

In addition to her fiction and poetry, Gibbon also writes a weekly nature column for the *Park Rapids Enterprise*. She states this work is essential for her, as it brings out her attentiveness. Just as being an anonymous stranger or a sensual woman is crucial to her art, so is being connected to nature. It is important for Gibbon to be able to "walk out on the porch and identify everyone by their sounds."

Maureen Gibbon is a writer with many passions and interests who is not afraid to bring her readers along, connecting with them through her fiction, poetry and newspaper column. We are lucky to be her traveling companions.

*Erin Lynn Marsh moved back to Northern Minnesota in Dec. 2007, after a 12-year hiatus in the Twin Cities. She is in the low-residency MFA program at Lesley University and lives/writes in Bemidji.*

July/August 2008  
Vol. 10 No. 11

## Region 2 Arts Council Offers Grants

R2AC has several upcoming grant deadlines for eligible artists and art organizations in the five-county area of Region 2, which includes Beltrami, Clearwater, Hubbard, Lake of the Woods and Mahanomen Counties.

### Arts Project Grants

September 10 & March 11

For any organization, school or community group that needs funding assistance with an arts project or event.

### Anishinaabe Arts Initiative Grants

October 1 & March 4

Grants awarded to individuals, schools and organizations for projects that address AAI's mission of supporting, maintaining and promoting traditional and contemporary Native American art.

### Individual Artists Grants

October 8 & February 11

Designed for artists at various career stages for production or exhibition of art, performances, workshop fees, materials/equipment, mentorships and projects.

### McKnight Grants to Arts Organizations.

January 7

For 501(c)3 arts organizations that need funding assistance for events or for small capital items.

For information and applications, contact Terri Widman at R2AC. 218-751-5447 or 800-275-5447.

E-mail: [r2arts@paulbunyan.net](mailto:r2arts@paulbunyan.net).

To download the guidelines and applications, visit: [www.r2arts.org](http://www.r2arts.org)

## Special Thanks to Outgoing R2AC Board Members

Thank you to Sandra Roman, Mahnomen County, and Bill Smith, Beltrami County, for volunteering their time and knowledge as members of the Board of Directors for the past four years. Also, thank you to Joanne Kellner, Lake of the Woods County, and Tanya Miller, Hubbard County, for serving on the board for the past two years.

Their dedication in serving on the Region 2 Arts Council Board was much appreciated. We wish them the very best in their future endeavors!

## R2AC Welcomes New Board Members

Four new members have been elected to the R2AC Board of Directors for two-year terms beginning July 1, 2008.

**Patt Rall**, Beltrami County, is the arts columnist for the *Bemidji Pioneer* and is involved with the Bemidji Community Theatre, the Academy of Life Long Learning and the Bemidji Area Arts Endowment.

**Lois Schaedler**, Mahnomen County, is a visual artist with degrees in weaving, painting and metalsmithing. She is the Librarian at the Mahnomen Library.

**Deane Johnson**, Hubbard County, is active with the Jackpine Writers' Block and *Talking Stick*, the Northern Light Opera Company, the Park Rapids Area Community Band and the Classic Chorale.

**Christine Rudnicki**, Lake of the Woods County, is a trained actor who has participated in Community Theater and has studied voice, piano and dance.

### Showcase Artist

## David Towley

Lidded Bowl  
3.5" tall, 7.5" diameter  
Cherry, Walnut and Curly Maple  
with Beeswax and Mineral oil finish



See Page 4 for more from David

*NORTHERN ARTS NEWS* is a free publication of the Region 2 Arts Council, published 6 times per year, with a distribution of over 1,300.

Funded by a grant from the McKnight Foundation, *Northern Arts News* provides news and information to artists in Beltrami, Clearwater, Hubbard, Lake of the Woods, and Mahnomen counties of north central Minnesota.

We welcome:

- story topic ideas;
- guest commentary topic ideas;
- names to add to our mailing list;
- collaboration and registration notifications.

To submit information and/or to be added to our mailing list, contact the R2AC office:

Call: 218-751-5447 or 1-800-275-5447

FAX: 218-751-2777

E-mail: [r2arts@paulbunyan.net](mailto:r2arts@paulbunyan.net)

Website: [www.r2arts.org](http://www.r2arts.org)

*Northern Arts News*  
Region 2 Arts Council  
426 Bemidji Avenue  
Bemidji, MN 56601

### Fiscal Year 2009 Board of Directors

Karen Edevold, <i>Chair</i>	Clearwater	694-6201
Suzi Rhae Ross, <i>Vice Chair</i>	Beltrami	335-8486
Sue Hopkins, <i>Secretary</i>	LOW	647-3343
Germaine Riegert, <i>Treasurer</i>	Mahnomen	473-2566
Patt Rall	Beltrami	
Christine Rudnicki	LOW	
Deane Johnson	Hubbard	
Marilyn Melby	Clearwater	657-2364
Cynthia Ekren	Hubbard	652-4257
Lois Schaedler	Mahnomen	

**Executive Director:** Terri Widman

**Executive Assistant:** Kay McCune

**Newsletter Editor:** Amy Zimmermann

Permission to reprint *Northern Arts News* is granted (excluding Guest Commentary) so long as *Northern Arts News* is credited as the source.

GUEST COMMENTARY inquiries are invited. Submit your topic idea to Terri Widman by telephone, FAX, or e-mail. Selected works must be previously unpublished and fit within the space allotment.

Due to the advanced print deadlines of this publication, we suggest that you call to confirm dates, times, and other pertinent information about events and opportunities listed here.

## R2AC Grant Writing Workshops

<b>Cass Lake</b>	<b>Aug. 11</b>	<b>Old Reservation Tribal Council Conference Rm</b>
Anishnaabe Arts Initiative Grant		4:30 - 5:30p.m.
<b>Red Lake</b>	<b>Aug. 14</b>	<b>Tribal Council HQ Bldg.</b>
Anishnaabe Arts Initiative Grant		4:30 - 5:30p.m.
<b>Bagley</b>	<b>Aug. 21</b>	<b>Faith Lutheran Church</b>
Individual Artist Grant Workshop		4:00 - 5:00p.m.
Arts Project Grant Workshop		5:00 - 6:00p.m.
<b>Bemidji</b>	<b>Aug. 25</b>	<b>R2AC Office</b>
Anishnaabe Arts Initiative Grant		4:00 - 5:00p.m.
Arts Project Grant Workshop		5:00 - 6:00p.m.
Individual Artist Grant Workshop		6:00 - 7:00p.m.
<b>Ogema</b>	<b>Aug. 28</b>	<b>Minwanjige Cafe</b>
Anishnaabe Arts Initiative Grant		4:00 - 5:00p.m.
Individual Artist Grant Workshop		5:00 - 6:00p.m.
<b>Baudette</b>	<b>Sept. 4</b>	<b>LOW High School ITV Rm.</b>
Individual Artist Grant		5:00 - 6:00p.m.
Arts Project Grant		6:00 - 7:00p.m.
<b>Park Rapids</b>	<b>Sept. 18</b>	<b>Public Library Conf. Rm.</b>
Listening Session		5:00 - 6:00p.m.
Individual Artist Grant Workshop		6:00 - 7:00p.m.
Arts Project Grant		7:00 - 8:00p.m.

**ADVANCE REGISTRATION is required. To reserve a place in a free workshop or for further information, please call 218-751-5447 or 1-800-257-5447, or e-mail: [r2arts@paulbunyan.net](mailto:r2arts@paulbunyan.net)**

Region 2 Arts Council Executive Director Terri Widman will offer grant writing workshops for anyone interested in applying for an Arts Project Grant, Individual Artist Grant, or an Anishnaabe Arts Initiative Grant within the Region 2 area (serving Beltrami, Clearwater, Hubbard, Lake of the Woods and Mahnommen counties). These workshops will familiarize potential applicants with the application process, what projects are eligible, how to develop a project budget and other tips.

The **Artists Project** grant writing session will be open to any non-profit organization, school (including community education offices), and units of government. These grants offer funding for a variety of art projects including costs related to performances or exhibitions, engagement of guest artists, and artists-in-residence.

The **Individual Artist** grant writing session will be open to artists in all art disciplines. These grants offer funding for costs associated with the exhibition, performance, or production of a creative work; purchase of materials or equipment necessary for a creative work; educational opportunities; mentorships; and proposals for career-enhancing projects or opportunities.

The **Anishnaabe Arts Initiative Grant** is open to individual Native American artists, schools who wish to bring in a Native American artist-in-residence and communities to assist an organization in sponsoring or producing an arts project.

## Bemidji Area Church Musicians

### 2008 Summer Recital Series

Wednesdays, Noon - 12:30 p.m.

- |         |  |
|---------|--|
| July 2  | Allison Seeger, piano<br>New Salem Church  |
| July 9  | Lois Simonson, piano<br>Evangelical Covenant Church  |
| July 16 | Handbell Choir<br>Judy Emery, director<br>Evangelical Free Church  |
| July 23 | Calvary Musicians<br>Calvary Lutheran Church   |
| Aug. 6  | Glenn Seibel, euphonium<br>Wayne Hoff, piano<br>United Methodist Church  |
| Aug. 13 | Wayne Hoff, organ<br>Tiffany Seibel, piano<br>Lea Bodenheimer, flute<br>Aardahl Lutheran                         |
| Aug. 20 | Joe Henry, piano, organ<br>St. Philip's Church   |
| Aug. 27 | Muff Magelssen, organ<br>Don MacKinnon, piano<br>The Other Mountain<br>Remnant Band<br>First Presbyterian Church |

Free Will Offering supports music scholarships. Lunch will be available following each recital. Costs to be announced.

## Northern Arts News

### Submission deadline

# August 7

for the

## Sept./Oct. issue

Please send to:

[amy.zimmermann@hotmail.com](mailto:amy.zimmermann@hotmail.com)

## OPPORTUNITIES

### Headwaters Youth Orchestra Program

Youth Orchestra is dedicated to orchestral training for serious young musicians in the communities of Beltrami, Clearwater and Hubbard Counties.

#### Audition Information

- Students should either have had one year of private instruction or play at least at level 2 of the Suzuki Method Books.
- Prepare a polished, recital-ready, unaccompanied solo piece. Choice of work but difficulty level should be accurate representation of technical and artistic ability.
- Sight reading is required for advanced placement.
- Ability to demonstrate a solid knowledge of 1st and 3rd position and be working on vibrato for advanced placement.

### Lake Bemidji State Park Concert Series

Local musicians will be featured at the State Park amphitheater. Sunday afternoons and some possible Saturday performances.

Presented by the Headwaters School of Music & the Arts and Lake Bemidji State Park.

Watch for a schedule in the Pioneer.

### Heartland Concert Association 2008-2009 Season

Fascinating Gershwin	Sept. 25
Trumpet Invasion	Oct. 20
Generations Trio	Feb. 8, 2009
Spanish Brass	Mar. 10, 2009
Romanza	May 19, 2009

Admission by season ticket only. Concerts at Park Rapids Area High School Auditorium at 7:30 p.m. For tickets, contact Bill Zigmant, P.O. Box 43, Park Rapids, MN 56470

### Arts Across Minnesota Program

Festivals Grant Deadline: Aug. 8

Arts Across Minnesota exists to help make outstanding arts experiences available to residents in Minnesota through touring presentations and festivals that engage local artists, children and members of the public in community arts celebrations.

These grants can be used to involve Minnesota artists and small to mid-size arts organizations in arts festivals and in the arts component of community-based festivals.

For more information, contact Amy Frimpong at amy.frimpong@arts.state.mn.us (651)-215-1607 or (800) 866-2787. [www.arts.state.mn.us/grants/AAMN\\_festivals.htm](http://www.arts.state.mn.us/grants/AAMN_festivals.htm)

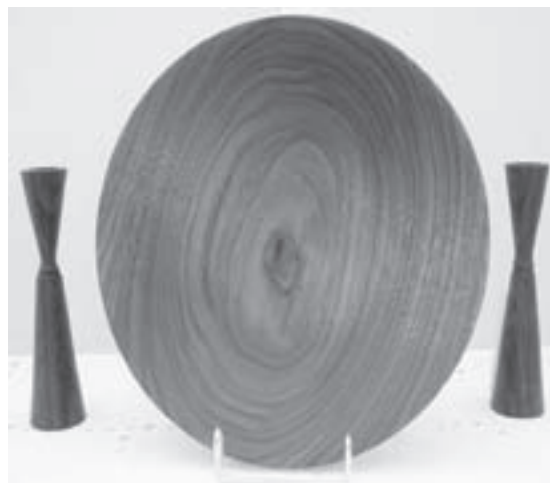
#### Call to Artists

**Dianne Honor Memorial Scholarship  
Craft Fair**  
Saturday, July 26  
Main Street in Walker  
Contact: 218-766-6962

## About the Showcase Artist David Towley

### Artist's Statement:

*"In my wood turning, I strive to marry form with function so as to please the eye as well as satisfy the hand."*



Walnut ensemble: the plate is 10" in diameter and the candlesticks are each about 7" tall and 1.5" in diameter. All three pieces are finished with mineral oil and beeswax.

## Jackpine Writers' Bloc

presents  
"20x20"

An exhibit combining art and written word. Twenty artists were selected to submit works in various media and twenty writers were selected to draw inspiration from the art in short fiction, poetry or essay.

The combined works, words and images will be displayed at

**Jackpine Java in Park Rapids**

**July 14 - Aug. 2**

Reception for the artists and writers on Sunday Aug. 3.

For more information, e-mail Sharon Harris at Sharrick1@WCTA.net.

## Region 2 Arts Council Arts Project Grant Awards

The Region 2 Arts Council recently awarded \$13,055 through the Arts Project Grants Program which is funded through an appropriation from the Minnesota State Legislature.

The **Pequana Playhouse, Baudette**, received \$1,500 to assist in the production of a children's theatre workshop production of *Pinocchio*.

The **Bemidji State University Music Department, Bemidji**, was awarded \$1,200 to assist in funding a concert and workshop with the New York Woodwind Quintet.

The **Jackpine Writers' Bloc, Park Rapids**, was awarded \$630 to install a two-week exhibit at Jackpine Java in Park Rapids.

The **Bemidji Symphony Orchestra, Bemidji**, was awarded in \$1,500 for their 70th Anniversary season.

The **Park Rapids Lakes Area Arts Council, Park Rapids**, received \$650 to assist them in funding Art Leap, a two-day open studio event in the Park Rapids area.

The **Headwaters School of Music, Bemidji**, was awarded \$1,500 to assist in funding Peter Ostroushko's performance in a duo with Sam Militch at the historic Chief Theater.

**Northern Exposure to Lifelong Learning, Bemidji**, was awarded \$1,500 to assist in funding the 6th annual "It's Only Clay National Juried Ceramics Competition and Exhibition" with ceramic artist, Linda Christianson.

**Bagley Art in the Park, Bagley**, received \$558 to assist in sponsoring a fun-filled day of art activities for artists, shoppers and observers at the Bagley City Park.

The **Bemidji Community Arts Council, Bemidji**, received a grant of \$1,500 to assist in funding the 6th annual "It's Only Clay National Juried Ceramics Competition and Exhibition" with ceramic artist, Linda Christianson.

The **Headwaters School of Music, Bemidji**, was awarded \$1,267 to fund a series of musician and arts performances at Lake Bemidji State Park.

The **Mask and Rose Women's Theater Collective, Bemidji**, received \$1,250 to assist in funding for the costumes of a large cast for the summer youth production of *Pippi Longstocking*.

## ArtPerk's New Additions

ArtPerk is a website for artists seeking display opportunities and gallery openings.

It has new features to scan an area to find Art Shows in that region which are accepting entries, hosting openings or have other art related opportunities.

[www.ArtPerk.com](http://www.ArtPerk.com)

## Region 2 Arts Council Individual Artist Grant Awards

The Region 2 Arts Council recently awarded \$5,000 through the Individual Artist Grant Program which is funded through an appropriation from the McKnight Foundation.

**Paula J. Swenson**, visual artist from **Bemidji**, received \$1,000 to purchase painting supplies and framing for an upcoming exhibition at Bemidji State University's Talley Galley.

**Beverly J. Everett**, symphony orchestra conductor from **Bemidji**, received \$1,000 to assist her in attending orchestra and chorus rehearsals in Berlin, Germany, to observe Sir Simon Rattle's preparation for performances of Beethoven's Ninth Symphony with the Berlin Philharmonic and Chorus.

**Frances Van Dorn**, teacher and musician from **Bemidji**, received \$1,000 to assist in attending a dance/movement therapy workshop in New Hampshire.

**Susan Kedzie-Webb**, illustrator from **Bemidji**, was awarded \$1,000 to attend The Society of Children's Book Writers and Illustrators Conference in Los Angeles.

**Alden Clyde Spray**, potter from **Gonvick**, was awarded \$1,000 to purchase a computerized electric kiln to assist him in firing pottery.

## CALENDAR OF EVENTS

### FIRST FRIDAY ART WALK July 3

(Thursday due to the holiday)

August 1

Downtown Bemidji

More information in our  
"Calendar of Events" under each  
participating business or gallery.

### JULY

#### Through July

**Bemidji Community Art Center** displays the "re-collection" art created by a collective of 1976 Bemidji High School graduates featuring Susan Waughtal, Deb Carlson and Michael Lemon. Opening reception Thursday, July 3, 5-7p.m. 426 Bemidji Ave N (Carnegie Library on 5th St). [www.bcac.wordpress.com](http://www.bcac.wordpress.com) 218-444-7570.

#### Through July

**Gallery North July Showcase Artist Irv Strom**, nature photographer, is featured. Open house Thurs., July 3, 2-5p.m. Featured artist is Steve McCoughan a wheel potter. 502 3rd St. NW across from Bemidji Woolen Mills. 218-444-9813.

#### Through July

**Dunn Brothers Coffee** displays paintings by Pat Shough. Opening reception July 3, 5-7 p.m. 501 Paul Bunyan Dr. S, Bemidji 218-444-5252.

#### Through July

**Wild Hare Bistro and Coffeehouse** will feature Judy Visker, painter of natural subjects. Opening reception is Thurs., July, 3, 3-5 p.m. 523 Minnesota Ave. NW, downtown Bemidji. 218-444-5282.

**July 2 - Aug 14 North Country Museum of Arts**, Park Rapids, presents "Nature Runs Through It"

by Judith Selby. 218-237-5900.

**July 5-6 18th Annual Lakefront Art and Craft Festival**, Bemidji. 10a.m. - 6p.m. Handcrafted market, great music and food. \$1 admission; under 12 free. 218-732-9439.

**July 6 Bemidji Community Band Concert**. 7p.m. Baker Park. Free.

**July 11 Second Friday Arts Reception**. North Country Museum of Art, Park Rapids. 5-7p.m. 218-237-5900

**July 12 The Blackduck History and Art Center** will host the 2nd Annual "Bridging Cultures: Share Our Cultures Day". 10-4p.m. Feature artist at the TIN PAN gALLERy will be Jackie Olson with the Norwegian Fold Art of Rosemaling. Informational session at 11a.m. Food available from variety of vendors. 218-835-7826.

**July 15 Reverse Painting on Glass Class**. Hosted by Grace Garland and Marion Caroline Reil from 1-4:30p.m. at Gallery North Cost: \$40. (218) 444-9813.

**July 17 Beginning Watercolor Class**. Hosted by Joyce

Martin and Marion Caroline Reil from 1-4p.m. at Gallery North. Cost: \$35. (218) 444-9813.

**July 19 Second Annual Gallery North Book Fest**. Visit with about 20 local and regional authors as they sign copies of their books, read passages and poetry from their books and discuss writing process. Free. For further information or schedule a time to read, contact Mary Knox-Johnson (218) 333-8740.

**July 18 - 20 Cass Lake Rib Fest**. Craft fair. Fri-Sat 11a.m. - 9p.m. Sun 11a.m. - 5p.m. Free. 800-356-8615

**July 20 Bemidji Community Band Concert**. Time to be decided. Baker Park. Free.

**July 25-26 26th Annual Summertime Art and Craft Festival and Women's Showcase**, Century School Complex, Park Rapids. Latest in handcrafted market plus women's showcase and business expo. Fri. 10-5p.m. Sat. 9-5p.m. Admission: \$2 adults; \$1 teens; children free. (218) 732-9439.

**July 25-27 28th Annual Blueberry-Art Festival**, Whiteside Park, Ely. Arts and crafts, children's activities, demonstrations, stage

### Bemidji Community Art Center's

## 41st Annual Art in the Park

Fine Arts and Craft Fair

July 19 and 20

Saturday 10 a.m. - 5 p.m.

Sunday 10 a.m. - 4 p.m.

Art vendors, food vendors and entertainment during this two-day event. Located in Library Park on Bemidji Avenue next to the Historic Carnegie Library in downtown Bemidji. For more information call 218-444-7570, e-mail [bcac@paulbunyan.net](mailto:bcac@paulbunyan.net) or visit [www.bcac.wordpress.com](http://www.bcac.wordpress.com)

shows and variety of food. Fri. noon-7p.m.; Sat. 10-6p.m.; Sun. 10-4p.m. Free. 218-365-6123.

**July 26 Bagley Art in the Park.** Bagley City Park. 9-3p.m. Features musical talents of Caleigh, the Arts Puppet Marionette Show and other art activities. Free. (218) 694-2095.

**July 26 The Lake of the Woods Art Guild** will be displaying paintings at the annual "Garden Club's Tour of Gardens" in Lake of the Woods county. The show will take place in the garden of Betsy and Greg Brown in Williams, MN on July 26. Contact Carol Erickson at 218-634-1940 or Deb Carlson at 218-783-5551.

## AUGUST

**Through August Gallery North** will feature (the late) Patty Persell, water color artist and past Gallery president as a tribute. **First Friday** open house Aug. 1, 2-5p.m. Featured artist Paul Simonson, spin artist, and the works of watercolor master, Betty Sauer, founding member of Gallery North. 502 3rd St. NW across from Bemidji Woolen Mills. 218-444-9813.

**Through August Wild Hare Bistro and Coffeehouse** will feature photographs and mosaics by Natasha Laumei. **First Friday** opening reception is Aug. 1, 3-5 p.m. 523 Minnesota Ave. NW, downtown Bemidji. 218-444-5282.

**Through August North Country Museum of Arts,** Park Rapids, will present 400 years of Old Masters Renaissance Paintings" which are part of the permanent collection. 218-237-5900.

**Aug. 3 Bemidji Community Band Concert.** 7p.m. Baker Park. Free.

**Aug. 8-9 Lakes, Loons & Legends Art & Music Fest,** Main

Street, Park Rapids. 9a.m.-6p.m. Free. 800-247-0054.

**Aug. 19 Paint on Feathers Class** with Marion Caroline Reil and Grace Garland. 1:30-4:30p.m. at Gallery North. Cost: \$40. All materials furnished. (218) 444-9813.

**Aug. 23 Northwoods Art Festival & Book Fair,** Hackensack. 10-4p.m. Free. 218-675-6052 or 218-675-5767.

### Northern Lights Opera Company presents

## Into the Woods

Award winning musical based on the 1976 book by Bruno Bettelheim, *The Uses of Enchantment*.

July 25-27

July 31 - Aug. 2

Curtain time is 7 p.m. for all shows

July 27 is a 3 p.m. matinee  
Park Rapids Area High School  
Auditorium.

Tickets available at Beagle Books, Walker Art Gallery, Sister Wolf Books, [www.northernlightopera.org](http://www.northernlightopera.org) or at the door.

## Summer Theater

Long Lake Theater  
Hubbard, MN

"Guys on Ice"  
July 9 - Aug. 2

"Last of the Red Hot Lovers"  
Aug. 6 - 30

Performances are Wed. 3 p.m. and Thurs. - Sat. at 7:30 p.m. Call (218) 732-0099 or visit [www.longlaketheater.net](http://www.longlaketheater.net) for ticket reservations and directions.

Paul Bunyan Playhouse  
Bemidji, MN

"Laughter on the 23rd Floor"  
July 9 - 19

"Three Days of Rain"  
July 23 - Aug. 2

"The Music Man"  
Aug. 6 - 16

Performances:  
Wed. - Sat. 8 p.m. and Sun. 2 p.m.  
Second week: Wed. - Sat. 8 p.m.  
Call 218-751-7270 or visit [www.paulbunyanplayhouse.com](http://www.paulbunyanplayhouse.com) for tickets.

## R2AC Donation Form

Become a **partner** in developing the arts in north central Minnesota. Join R2AC today! Your donation is tax deductible. Please mail your annual donation to: R2AC, 426 Bemidji Ave, Bemidji, MN 56601.

Name \_\_\_\_\_  
Address \_\_\_\_\_  
Telephone \_\_\_\_\_ E-mail \_\_\_\_\_

### LEVELS OF PARTNERSHIP

CONTRIBUTOR _____	\$10	DONOR _____	\$25
SUPPORTER _____	\$50	SUSTAINER _____	\$100
PATRON _____	\$250	BENEFACTOR _____	\$500 & Up



**Region 2 Arts Council**  
**426 Bemidji Ave.**  
**Bemidji, MN 56601-3139**

Non-Profit Organization  
 U.S. Postage  
**PAID**  
 Bemidji, MN  
 Permit #108

Address Service Requested

### Inside this issue:

R2AC New Board Members	p. 2
Grant Writing Workshops	p. 3
Jackpine Writers' Bloc Exhibit	p. 5
Bemidji Art in the Park	p. 6
Northern Lights Opera Company	p. 7

*NORTHERN ARTS NEWS* is a free publication of the Region 2 Arts Council, funded by a grant from the McKnight Foundation. Mission: "The Region 2 Arts Council strengthens the presence of the arts by supporting opportunities for arts creation, promotion, education, and funding for the people of Beltrami, Clearwater, Hubbard, Lake of the Woods, and Mahnommen Counties."

## Noteworthy

**Kevin Jackson** of Cass Lake - Bena High School won the Art of Discovery Congressional Award for District 8 for his painting "Dancer." His painting will hang in the Fine Art High School Exhibition in Washington D.C. in the Cannon Tunnel for one year.

**Rachel Thelen** of Park Rapids High School won the Art of Discovery Congressional Award for District 7 for her oil painting "A Walk to Remember." Her painting will also hang in the Washington exhibit for a year.

**Jayson Knutson**, Bemidji, had his poem "Forever Rose" published on [www.poetry.com](http://www.poetry.com).

**Gail Rixon** published her third book of poems titled *Living on Dew*. Copies are available locally. Contact [ncbclay@paulbunyan.net](mailto:ncbclay@paulbunyan.net).

**Cynthia Wildes**, Becida, had her short story titled "Bloody Bones" accepted and will be published in *Necrotic Tissue Magazine* in the July issue. It can be seen at [www.NecroticTissue.com](http://www.NecroticTissue.com). She also had her photo "Fury" accepted in the exhibit "Blow Up" which is a photo competition at the Bromfield Gallery, Boston, Mass.

**Pat Shough**, Bemidji, won second place in the Intermediate Transparent Division for her painting "Heavenly Poppies" at the Artists of Minnesota annual spring show. **Mary Vaudrin**, Bemidji, won first place with her glass piece "River Stones" in the Intermediate Mixed Media & Dimensional Division. **Terry Honstad**, Bemidji, won first place and a creative award in the Beginners Division for her mixed media work "Changing Times" and "Toddler Twist" won a merit award and a second place in the Theme Division. **Kathy Gustafson**, Bemidji, won first place in a creativity award for "Horsepower" in the Super Gold Division and won a merit and creativity award in the Mini Division with "Visitors."

### Call for Entries:

#### Paul Bunyan Mall

introduces the first

#### Project Imagination Program

**Children ages 10 - 14** submit an original piece of writing (1500 words or fewer) prepared as a group or individually answering "How your city or state shapes America" or "What important contributions your city or state is making to improve America?"

Children ages 5 - 9 submit a piece of artwork that follow the same theme or showcase their favorite thing about their city or state.

For more information, contact Susan Goudge at 218-751-3195.

### Call to Artists:

**Northern Artist Association** will host the Artist of Minnesota May 2009 Spring Show. This juried show is for members. To become a member visit, [www.ArtistOfMinnesota.org](http://www.ArtistOfMinnesota.org).

For general information, e-mail [pshough@paulbunyan.net](mailto:pshough@paulbunyan.net)